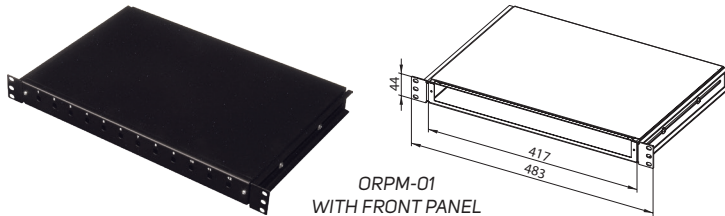


# FIBER-OPTIC PRODUCTS

## 19" FIXED FIBER-OPTIC SPLICE BOX



- Type: fixed
- Height: 1U
- Modular front panels not included (see below)
- Up to 24 positions for FO couplings

- Front panel must be selected and ordered separately
- Cable entry openings in rear
- Holes not in use can be covered with blank modules

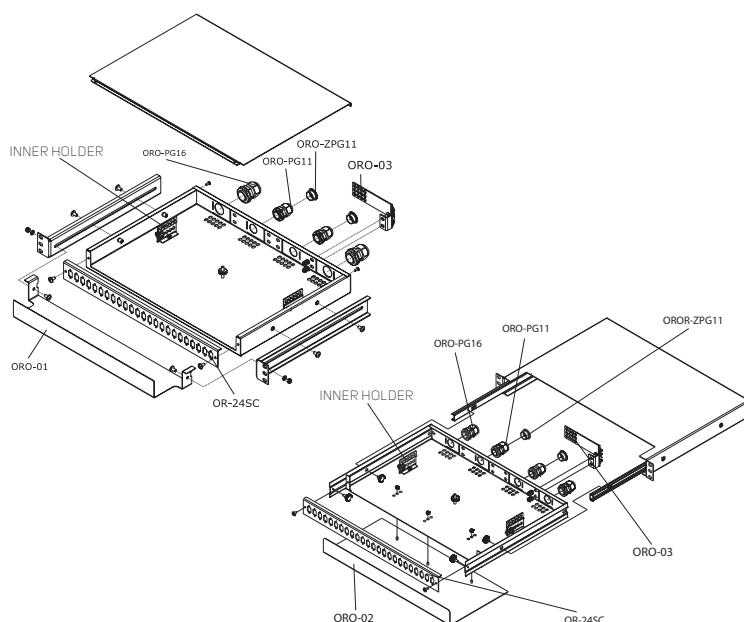
- Installed in racks with adjustable holders
- Installation kit for splice cassettes and inner organizer (included)
- Wide range of accessories (optional)

- Color: powder-coated RAL 9005
- Package includes:
  - ORPM-01: 1× fibre-optic box, 2× cable holders, 2× 19" brackets, 4× screws M5, 2× screws M4
  - OR-xxxxx: 1× front panel

Code	H (in U)	W	D (mm)	Description	Package
ORPM-01	1	19"	300	Fixed	1 pc



ACCESSORIES FOR FIBER-OPTIC SPLICE BOXES		
Code	Description	Package
ORO-K200	Splice cassette	1 pc
ORO-PG11	PG11 coupling	10 pcs
ORO-PG16	PG16 coupling	10 pcs
ORO-ZPG11	Cover of opening for PG11 coupling	10 pcs
ORO-ZPG16	Cover of opening for PG16 coupling	10 pcs
ORO-01	Front organizer for ORPM	1 pc
ORO-02	Front organizer for ORVM	1 pc
ORO-03	Rear organizer	1 pc



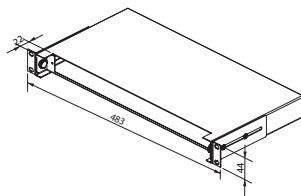
TYPES OF MODULAR FRONT PANELS					
Code	Number of holes for FO couplings				Package
	8	12	16	24	
OR-xxST	•	•	•	•	1 pc
OR-xxSC	•	•	•	•	1 pc
OR-xxDSC	•	•	•	•*	1 pc
OR-xxFC	•	•	•	•	1 pc
OR-xxFCD	•	•	•	•	1 pc

\* Without numbering and holes for screws.

## 19" TELESCOPIC FIBER-OPTIC SPLICE BOXES



ORVE-01-250



Code	H (in U)	W	D (mm)	Description	Package
ORVM-01	1	19"	320	Telescopic	1 pc
ORVE-01-250	1	19"	250	Telescopic	1 pc

- Used to terminate optical cables in racks
- Type: telescopic
- Height: 1U
- Modular front panels not included – see table on page 115
- Up to 24 positions for FO couplings

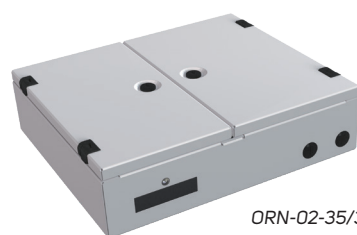
- Front panel must be selected and ordered separately
- Cable entry openings in rear
- Holes not in use can be covered with blank modules
- Installs into racks with two sliding holders

- Installation kit for splice cassettes and inner organizer included (ORVM-01 only)
- Wide range of accessories (optional)
- Color: powder-coated RAL 9005

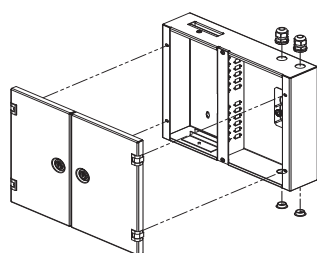
Package includes:

- ORVM-01: 1x fibre-optic box, 2x cable holders, 2x screws M4
- ORVE-01-250: 1x fibre-optic box, 2x 19" brackets, 6x screws M4

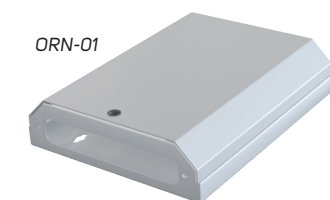
## WALL-MOUNTING FIBER-OPTIC SPLICE BOXES



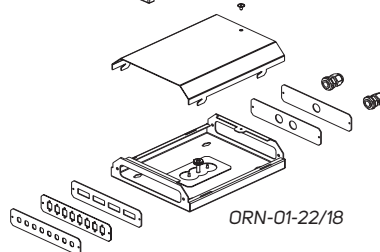
ORN-02-35/30



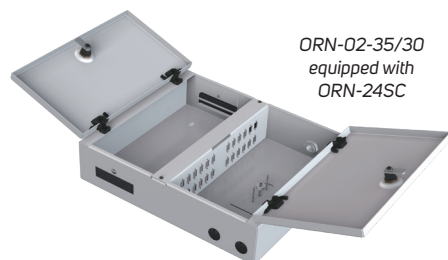
Code	Type	W × H (mm)	Package
ORN-01-30/18	Single	300 × 180	1 pc
ORN-01-22/18	Single	220 × 180	1 pc
ORN-02-35/30	Double	350 × 300	1 pc



ORN-01



ORN-01-22/18



ORN-02-35/30  
equipped with  
ORN-24SC



ORN-01-30/18

### PANELS FOR WALL-MOUNTING FIBER-OPTIC SPLICE BOXES

ORN-01-30/18 and ORN-01-22/18	ORN-02-35/30	Package
ORN-M-8ST	ORN-24ST	1 pc
ORN-M-8SC	ORN-24SC	1 pc
ORN-M-4DSC	ORN-12DSC	1 pc
ORN-M-1PG	ORN-24FC	1 pc
ORN-M-2PG	ORN-12FCD	1 pc
ORN-M-8FC	–	1 pc
ORN-M-4FCD	–	1 pc

- Wall-mounting fiber-optic splice boxes (used to terminate optical cables)
- Types:
  - double—size 350×300 mm; equipped with double-leaf door and lock
  - single—size 300×180 mm or 220×180 mm

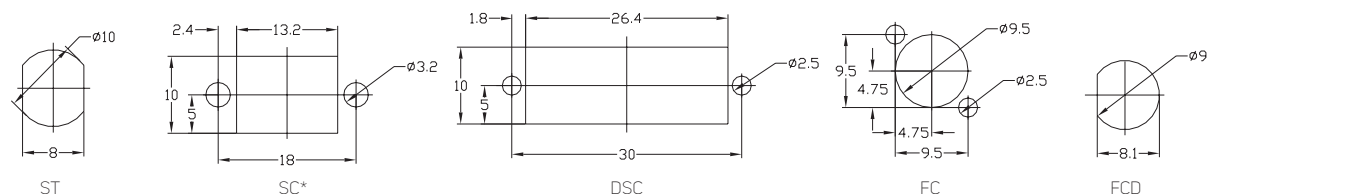
- Modular panels with holes for couplings—see table below (must be ordered separately)
- In double FO splice-box up to 24 positions for ST or SC or FC or 12 DSC or FCD adapters
- In single FO splice-box up to 8 positions for ST or SC or FC or 4 DSC or FCD adapters

- Holes not in use can be covered with blank modules
- Cable entry through PG couplings (PG 9 for ORN-01 and PG 11 for ORN-02)
- Installation kit for splice cassette (ORO-K2000) included
- Color: powder-coated RAL 7035

Package includes:

- ORN-01-xx/xx: 1x WM box (box with cover), 1x screw M4, 4x screws M3, 1x nut M5
- ORN-02-xx/xx: 1x WM box (box with 2 doors), 2x PG11 with nuts, 2x Cover of opening for PG, 2x screws M4, 1x nut M5
- ORN-M-xxxx, ORN-xxxxx: 1x panel

## Types of holes for fiber-optic connectors:



\* Used also for DUAL-LC (adapter needed).

Note: dimensions in mm (before powder coating).

**CONTEG, spol. s r.o.**

Stetkova 1638/18

140 00 Prague 4

Czech Republic

Tel.: +420 565 300 358

[info@conteg.com](mailto:info@conteg.com)

[www.conteg.com](http://www.conteg.com)

**CONTEG**